



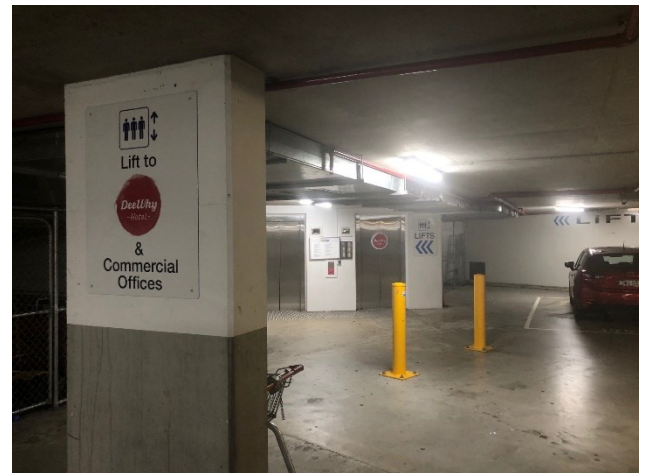
## HOW TO GET TO DEE WHY ENDOSCOPY UNIT

Our Private Day Hospital is located on Level 4 of the Commercial Tower of Dee Why Grand

### **Option 1: Parking 2 hours free**

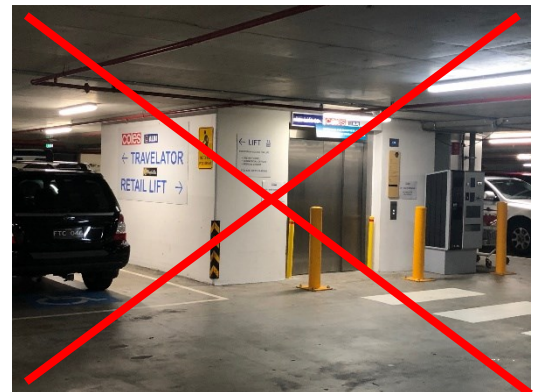
**Parking can be confusing here, apologies.**

1. There are 2 entrances into our carpark either via Pacific Parade or Sturdee Parade
2. Proceed down to underground parking and go two levels down to the **'BLUE'** level. (top photo)
3. If you see **"Bayfields"**, you are on the wrong level & need to go down one more level.
4. Our lifts are located in the corner, same location as 'Bayfields' which is on the level above. (middle photo shows correct lifts)
5. *Do not take the lift in the middle or escalator towards Coles / retail. (bottom photo shows incorrect lifts & travelator)*
6. Take **Commercial Tower** lift to Level 4  
There you will see our reception. Welcome.



### **Option 2: Drop Off Only**

1. Drop off point is on the corner of Pittwater Road and Sturdee Parade (near the phone booth)
2. Pedestrian access to the Commercial Tower of Dee Why Grand is from the street level on the corner
3. Take the Commercial Tower lift to Level 4  
There you will see our reception



**Please allow an extra 15 minutes to find parking to meet appointment time**

N.B. A request has been submitted to the Dee Why Grand Management for improved signage in the carpark directing visitors to the Commercial Tower. Management have acknowledged that action will be taken for improvement to assist all tenancies. Thank you for your patience and we apologise for any inconvenience caused in the interim.