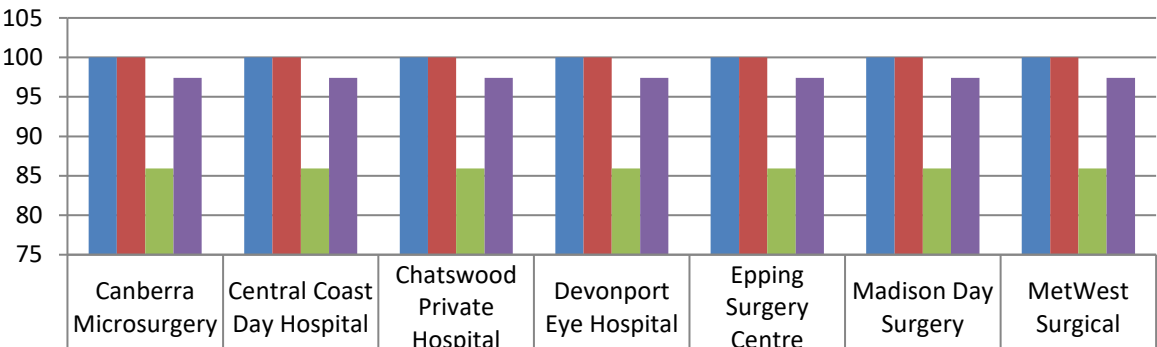




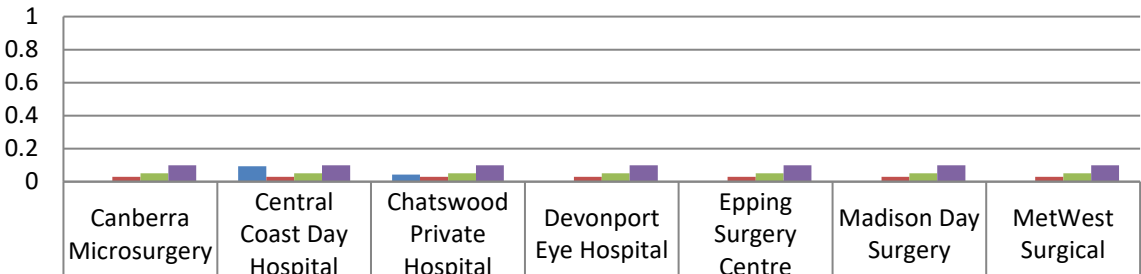
Devonport Eye Hospital (DEH) is a part of the PresMed Australia (PMA) group of day hospitals. The DEH and PMA group are members of the Australian Council on Healthcare Standards (ACHS) along with other public and private health facilities across Australia. Every six months, all PMA facilities submit clinical outcomes data to the ACHS to compare and benchmark our clinical care. This data is evaluated by staff, doctors and management to improve patient care, service delivery and quality improvement. Review of our data for the first half of 2024 demonstrates excellent results consistent with high standards of patient safety and clinical outcomes. Below are some key highlights:

Day Patient CI 1.1 Booked patients assessed before admission



HCO Rate	100	100	100	100	100	100	100
Presmed Group Aggregate Rate	100	100	100	100	100	100	100
General Aggregate Rate	85.9475	85.9475	85.9475	85.9475	85.9475	85.9475	85.9475
Private Peer Aggregate Rate	97.4118	97.4118	97.4118	97.4118	97.4118	97.4118	97.4118

Day Patient CI 5.1: Unplanned return to operating room on same day as initial procedure



HCO Rate	0	0.0936	0.0425	0	0	0	0
Presmed Group Aggregate Rate	0.0297	0.0297	0.0297	0.0297	0.0297	0.0297	0.0297
General Aggregate Rate	0.0514	0.0514	0.0514	0.0514	0.0514	0.0514	0.0514
Private Peer Aggregate Rate	0.0991	0.0991	0.0991	0.0991	0.0991	0.0991	0.0991

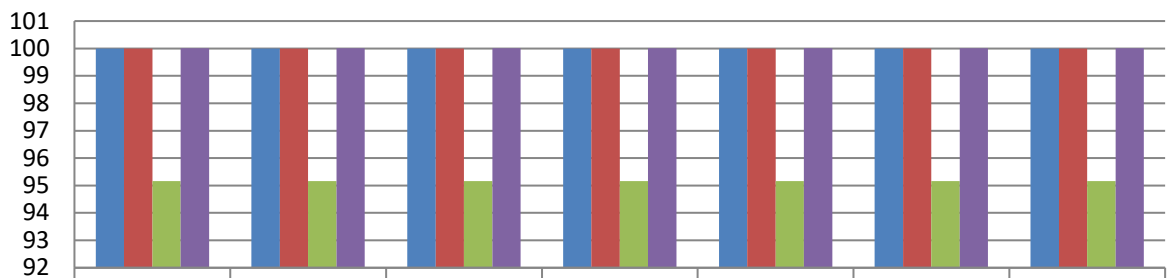


Day Patient CI 6.1: Unplanned transfer or overnight admission related to procedure



HCO Rate	0	0	0	0	0	0	0
Presmed Group Aggregate Rate	0.0074	0.0074	0.0074	0.0074	0.0074	0.0074	0.0074
General Aggregate Rate	0.4626	0.4626	0.4626	0.4626	0.4626	0.4626	0.4626
Private Peer Aggregate Rate	0.1067	0.1067	0.1067	0.1067	0.1067	0.1067	0.1067

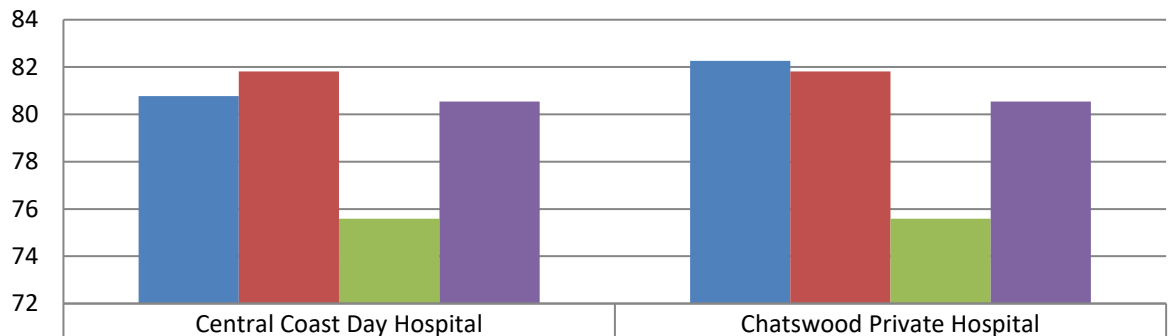
Day Patient CI 9.2 Completeness of follow-up instruction form for patients



HCO Rate	100	100	100	100	100	100	100
Presmed Group Aggregate Rate	100	100	100	100	100	100	100
General Aggregate Rate	95.1611	95.1611	95.1611	95.1611	95.1611	95.1611	95.1611
Private Peer Aggregate Rate	100.0026	100.0026	100.0026	100.0026	100.0026	100.0026	100.0026

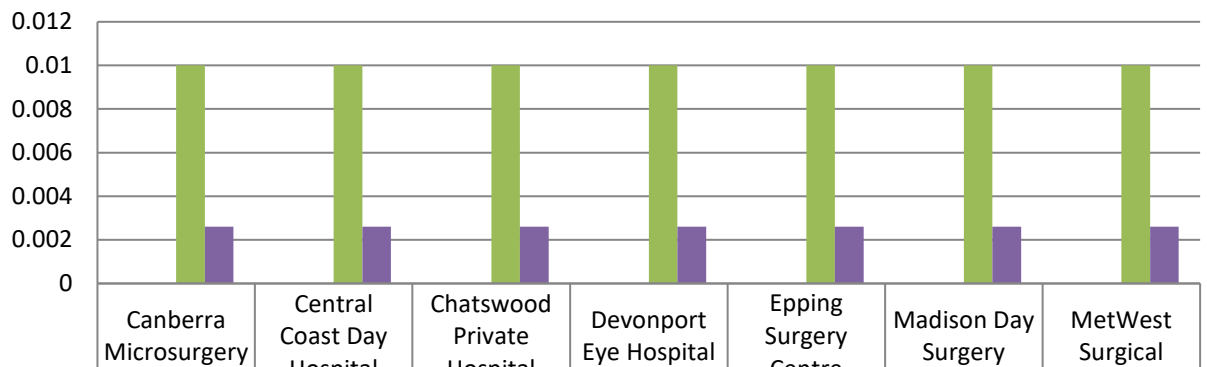


Paediatrics CI 1.1 Registered nurses with paediatric basic life support qualifications



	Central Coast Day Hospital	Chatswood Private Hospital
HCO Rate	80.7692	82.2581
Presmed Group Aggregate Rate	81.8182	81.8182
General Aggregate Rate	75.5814	75.5814
Private Peer Aggregate Rate	80.5461	80.5461

6.3 Medication Safety - Medication errors - adverse event requiring intervention



	Canberra Microsurgery	Central Coast Day Hospital	Chatswood Private Hospital	Devonport Eye Hospital	Epping Surgery Centre	Madison Day Surgery	MetWest Surgical
HCO Rate	0	0	0	0	0	0	0
Presmed Group Aggregate Rate	0	0	0	0	0	0	0
General Aggregate Rate	0.01	0.01	0.01	0.01	0.01	0.01	0.01
Private Peer Aggregate Rate	0.0026	0.0026	0.0026	0.0026	0.0026	0.0026	0.0026