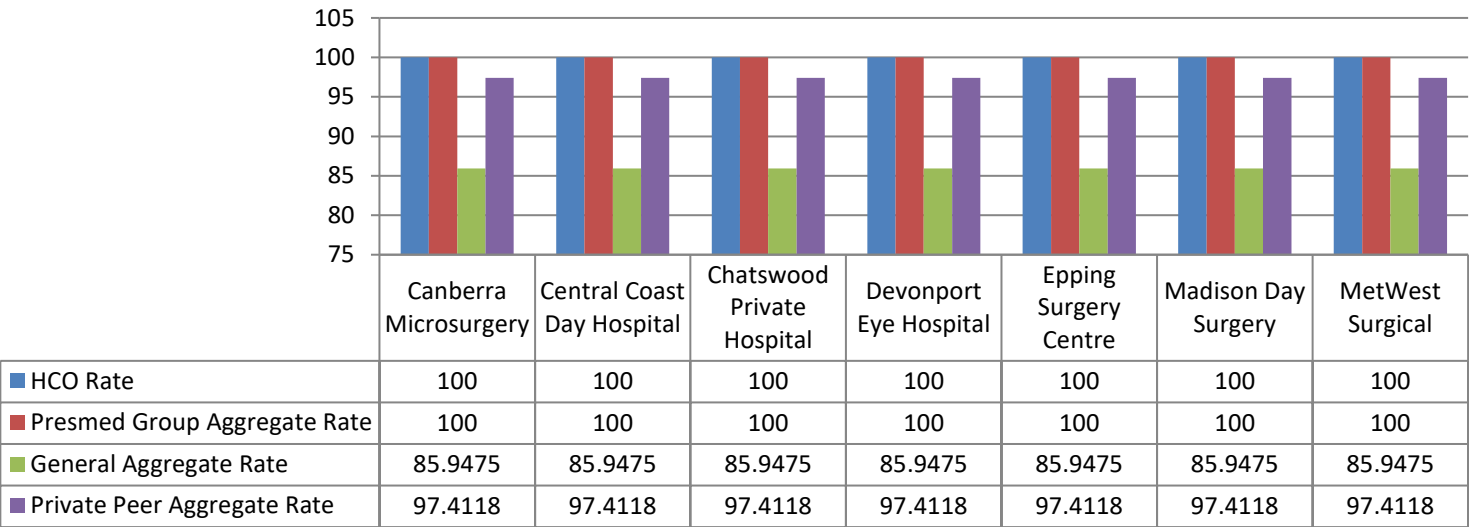
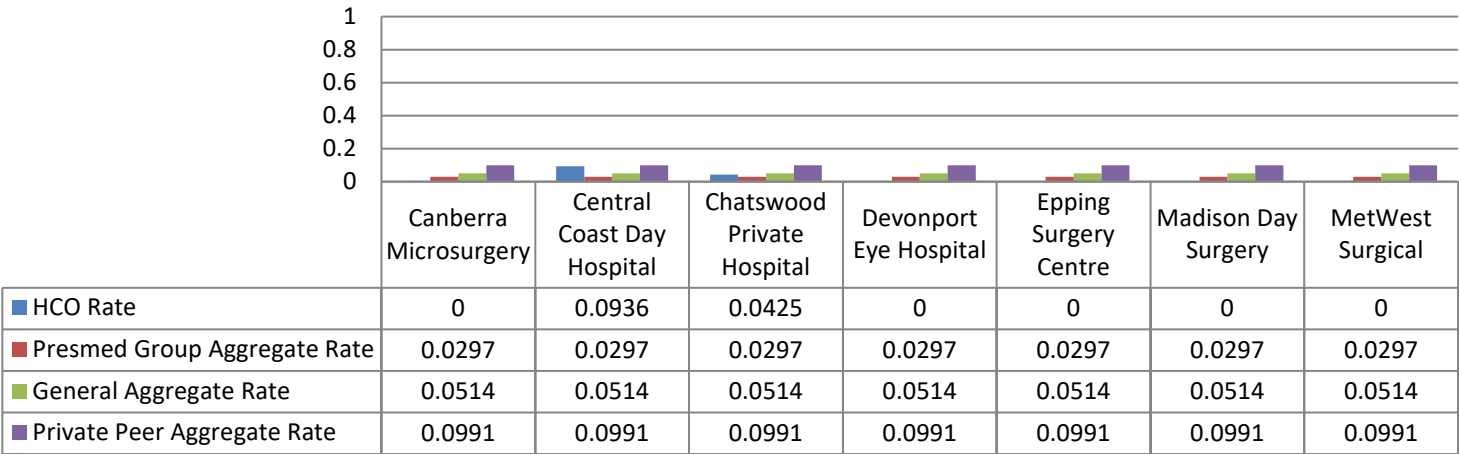


Epping Surgery Centre (ESC) is a part of the PresMed Australia (PMA) group of day hospitals. The ESC and PMA group are members of the Australian Council on Healthcare Standards (ACHS) along with other public and private health facilities across Australia. Every six months, all PMA facilities submit clinical outcomes data to the ACHS to compare and benchmark our clinical care. This data is evaluated by staff, doctors and management to improve patient care, service delivery and quality improvement. Review of our data for the first half of 2024 demonstrates excellent results consistent with high standards of patient safety and clinical outcomes. Below are some key highlights:

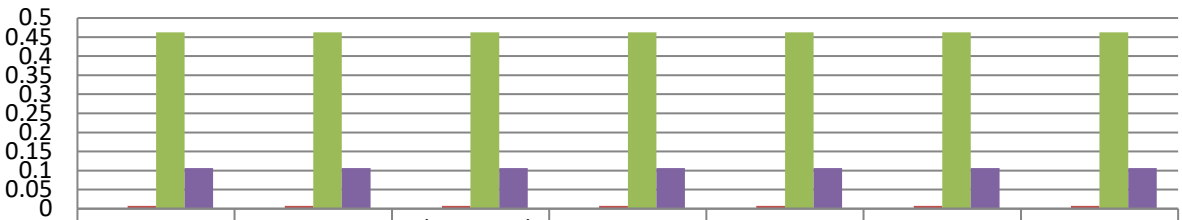
Day Patient CI 1.1 Booked patients assessed before admission



Day Patient CI 5.1: Unplanned return to operating room on same day as initial procedure

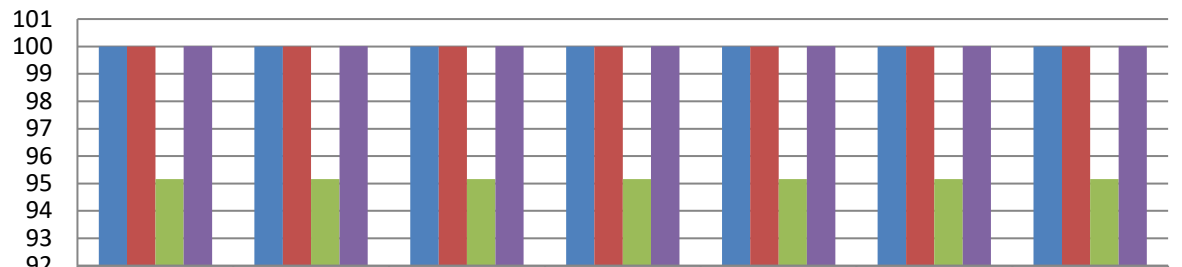


Day Patient CI 6.1: Unplanned transfer or overnight admission
related to procedure



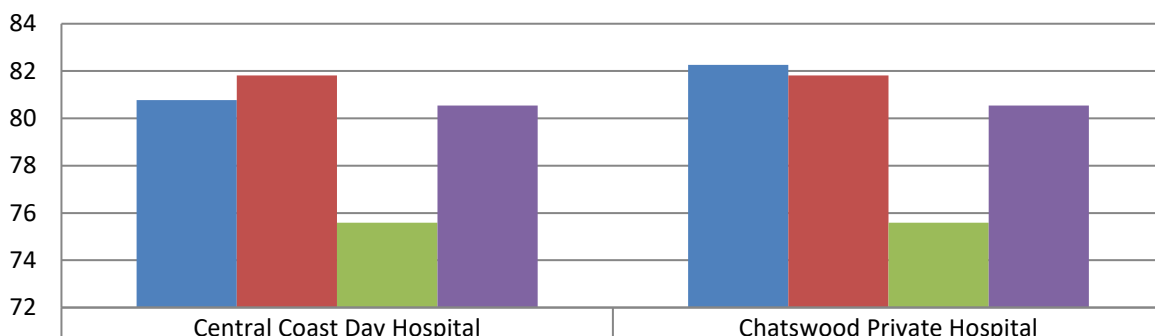
HCO Rate	0	0	0	0	0	0	0
Presmed Group Aggregate Rate	0.0074	0.0074	0.0074	0.0074	0.0074	0.0074	0.0074
General Aggregate Rate	0.4626	0.4626	0.4626	0.4626	0.4626	0.4626	0.4626
Private Peer Aggregate Rate	0.1067	0.1067	0.1067	0.1067	0.1067	0.1067	0.1067

Day Patient CI 9.2 Completeness of follow-up instruction form for
patients



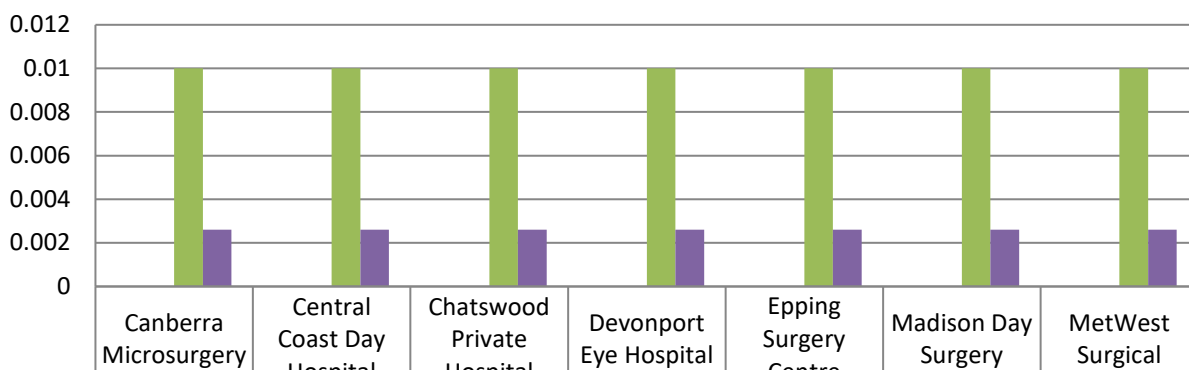
HCO Rate	100	100	100	100	100	100	100
Presmed Group Aggregate Rate	100	100	100	100	100	100	100
General Aggregate Rate	95.1611	95.1611	95.1611	95.1611	95.1611	95.1611	95.1611
Private Peer Aggregate Rate	100.0026	100.0026	100.0026	100.0026	100.0026	100.0026	100.0026

Paediatrics CI 1.1 Registered nurses with paediatric basic life support qualifications



HCO Rate	80.7692	82.2581
Presmed Group Aggregate Rate	81.8182	81.8182
General Aggregate Rate	75.5814	75.5814
Private Peer Aggregate Rate	80.5461	80.5461

6.3 Medication Safety - Medication errors - adverse event requiring intervention



HCO Rate	0	0	0	0	0	0	0
Presmed Group Aggregate Rate	0	0	0	0	0	0	0
General Aggregate Rate	0.01	0.01	0.01	0.01	0.01	0.01	0.01
Private Peer Aggregate Rate	0.0026	0.0026	0.0026	0.0026	0.0026	0.0026	0.0026